



Linux on iPAQ



Jamey Hicks

Cambridge Research Laboratory, HP Labs

February 9, 2004

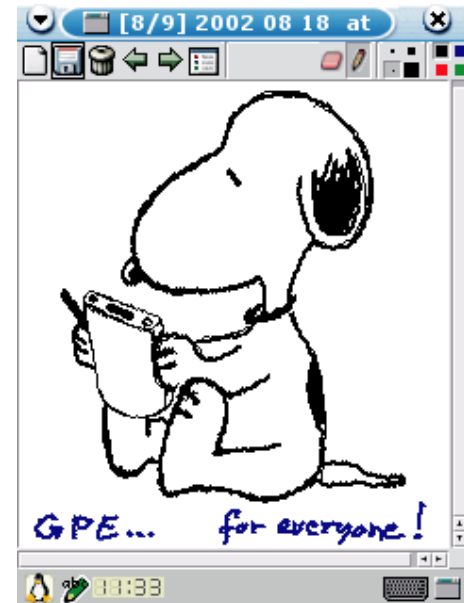


- Why Linux?
- iPAQ Linux
- Handheld Linux Products
- Developing for ARM Linux
- CRL Mercury BackPAQ

Why Linux?



- Full source/binary availability
- Freedom to change any part of the system
- Advanced networking
 - IPv6, MIPv6, IPSEC
- Advanced security
 - ssh, sshd
- Complete GUI flexibility
 - GTK and Qt
 - Microwindows, picogui, ...
- Java 2 SE and ME



it's a full-fledged computer

Why Linux?



- More stable operating system
 - Protected process environment
 - User/kernel separation
 - Yields uptimes of 6-9 months when we last surveyed
- Same software as laptop or server
 - Same kernel
 - Supports all protocols, filesystems
 - Subset of IO devices, though
 - Same API's
 - Not subset/superset
 - Same tools and utilities, python, perl, ruby, ...

- Adjust for storage space (32MB)
 - This can be a problem
 - Can be helped by CF storage cards
- Adjust for screen size (320x240 12 to 16 bit color)
 - GUI's need to be refactored
- Adjust for lack of keyboard
- Input methods: stylus, xkbd, xstroke, serial cable, remote input via X, ssh

```
Off
bochs
Bochs Startup Menu
UGA BIOS - Version 2.40
Copyright (C) 1990-2000 Elpin Systems, Inc.
All Rights Reserved.

Licensed for use with bochs, courtesy of MandrakeSoft.

For information on this or other UGA development products, contact
Elpin Systems at: (800) 723-9038 or www.elpin.com

LILO boot:
Loading Linux.....
Uncompressing Linux...done.
Now booting the kernel
Console: 16 point font, 400 scans
Console: colour VGA+ 80x25, 1 virtual console (max 63)
Calibrating delay loop.. ok - 0.82 BoogoMIPS
Memory: 6900k/8192k available (612k kernel code, 384k reserved, 296k data)
This processor honours the WP bit even when in supervisor mode. Good.
Swansea University Computer Society NET3.034 for Linux 1.3.77
NET3: Unix domain sockets 0.12 for Linux NET3.033.
Swansea University Computer Society TCP/IP for NET3.034
IP Protocols: ICMP, UDP, TCP

#1 bochs 08:54 P
```

- Bochs x86 emulator running on iPAQ

- Linux 2.4.19 and 2.6.1
- Networking
 - WLAN, WWAN
 - IPSEC and other VPN
 - IPv6, Mobile IP
- Filesystems
 - JFFS2: compressed journaling flash filesystem
 - EXT3 on conventional drives



Not just a zippy PDA, but a pocket workstation

- iPAQ H31xx, H36xx, H37xx, H38xx, H39xx, H5xxx
 - H22xx, H19[34]x in progress
- Dell Axim
- Toshiba e74x
- Siemens Simpad
- Jornada 560/720
- Keyboards: Stowaway, MicroKeyboard, etc.
- CF, single/dual PCMCIA sleeves
 - Various ethernet CF/PCMCIA cards
 - 802.11b interfaces, BlueTooth
 - CF, Microdrive, IDE interface to larger drives
- Barcode scanner, various serial GPS's, etc.

iPAQ Linux Distributions

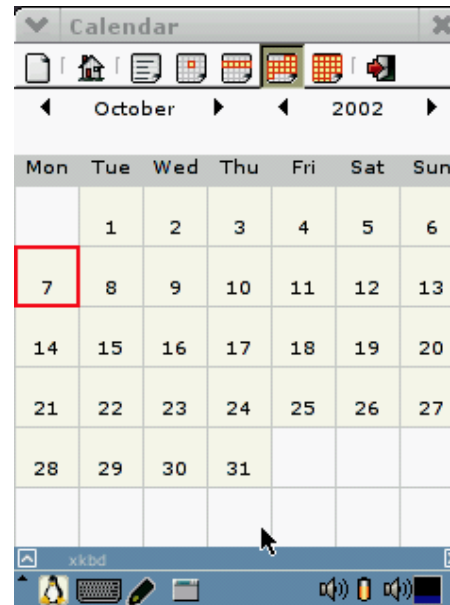
- Handhelds.org project started March 2000
- Familiar Linux (familiar.handhelds.org)
 - jffs2 root, python scripting, ipkg, X & window manager
- Opie distribution
 - Open source version of Qtopia (www.trolltech.com)
- Intimate Linux (intimate.handhelds.org)
 - ARM Debian with disk or net, boot via WinCE or Familiar

Linux on the iPAQ: Familiar distribution

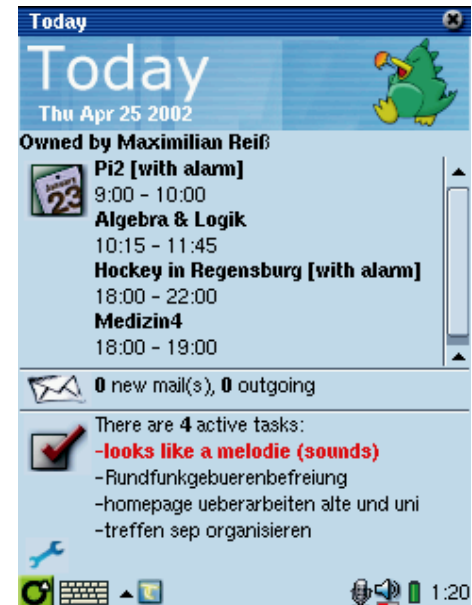


- JFFS2 root
- X Window System
 - Anti-aliased fonts
 - Landscape or Portrait mode
- Full networking
- sshd
- Distributed as ipkgs

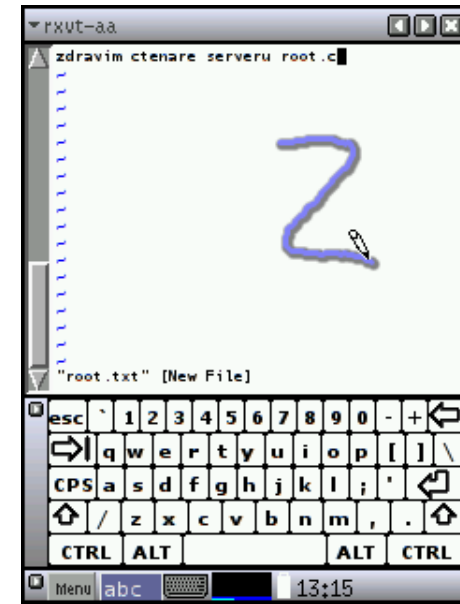
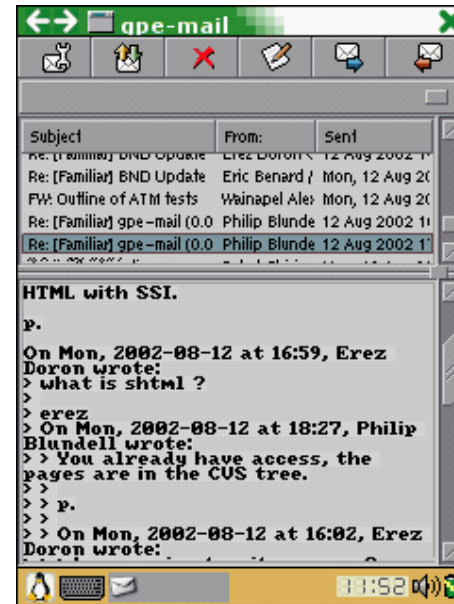
GPE



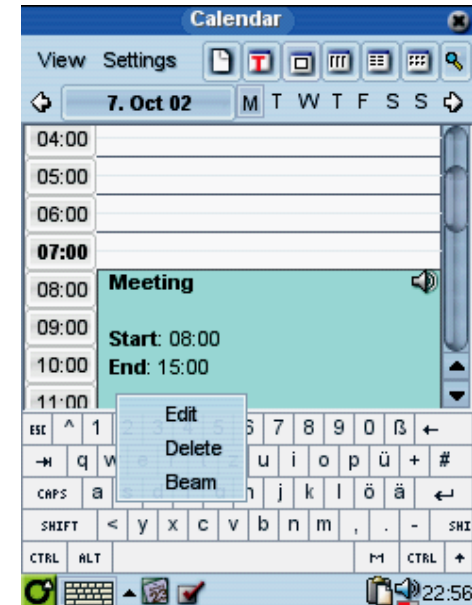
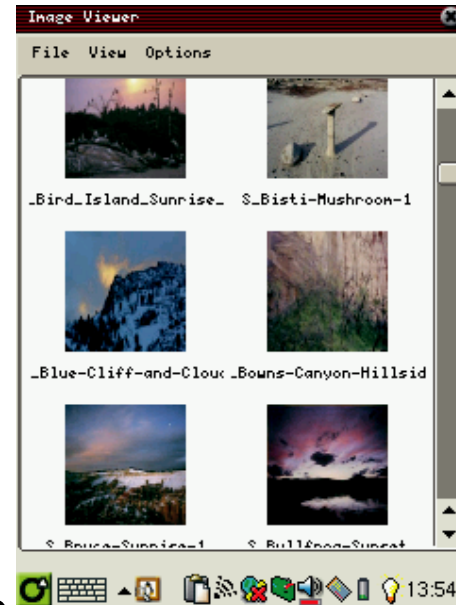
OPIE



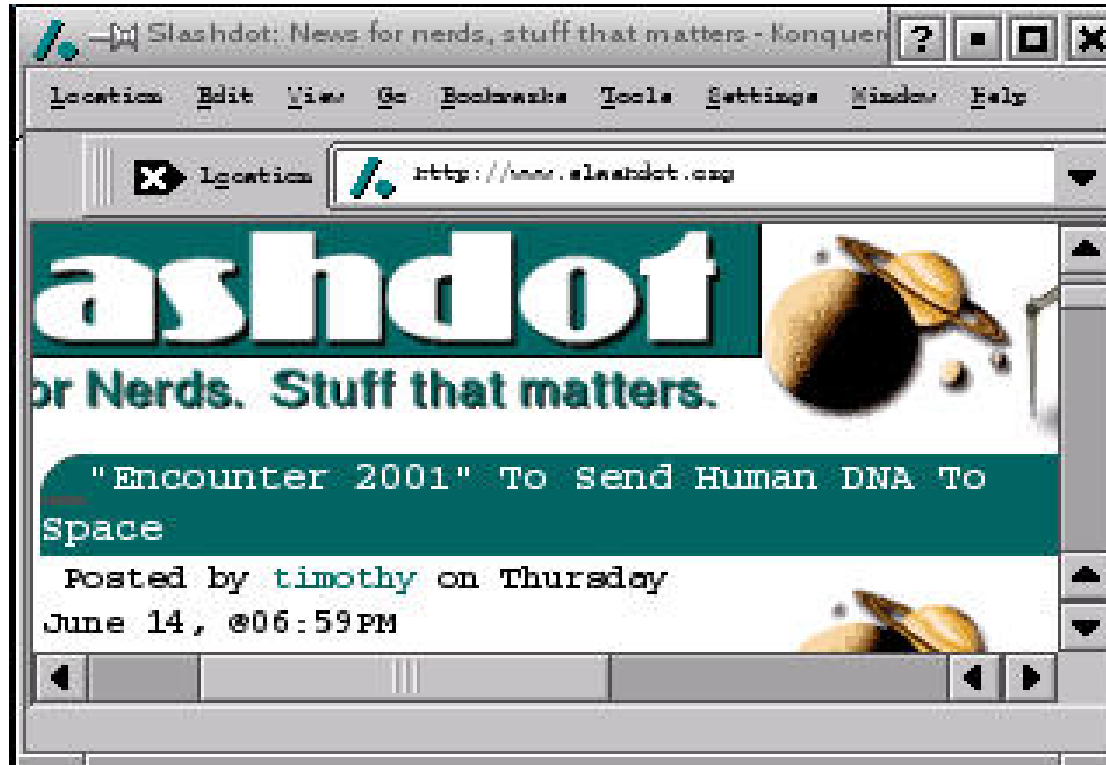
- X window system
 - with render extension
 - with rotate and resize
 - choose landscape/portrait on the fly
- GTK 2.2 toolkit
- Full screen handwriting input
- sqlite for pim data
- Available in Familiar distribution
- <http://gpe.handhelds.org>



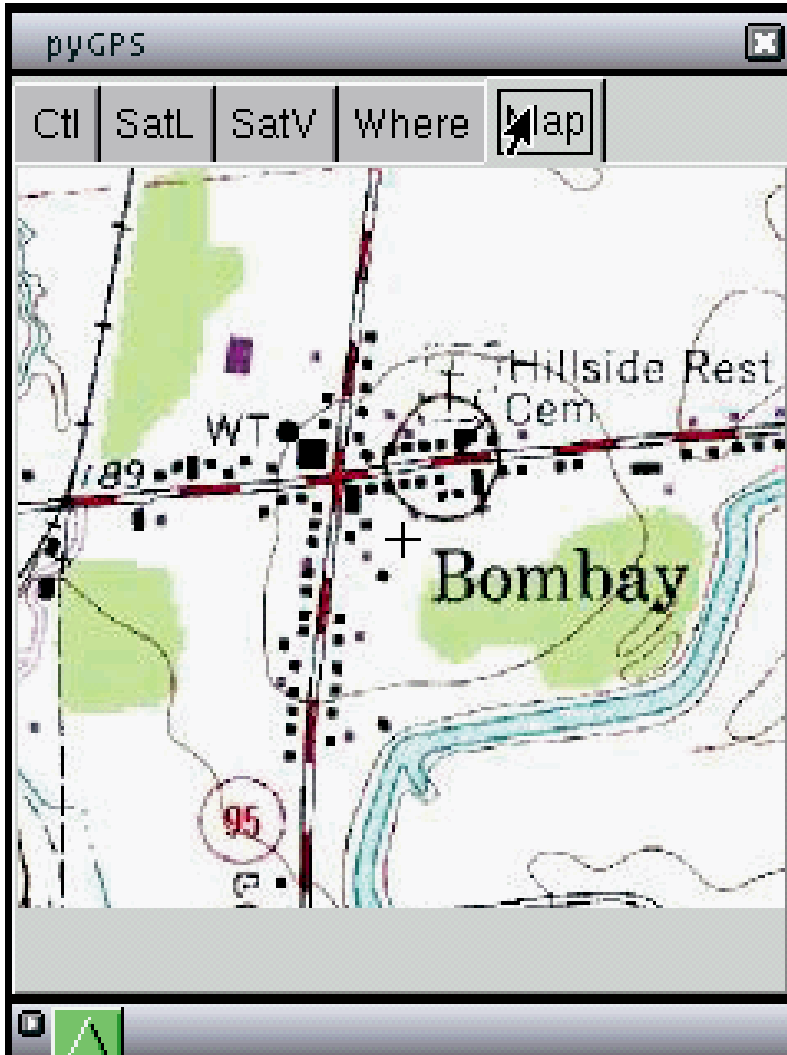
- QT/Embedded
- full open source PIM suite
 - derived from Qtopia
- without X
 - (soon with X too...)
- distributed as ipkg's
- PDA-oriented
- compatible with Sharp Zaurus
- <http://www.opie.info/>



Debian (Intimate) Linux



- Full blown linux on the Compaq iPAQ!
- Installed on CF, PCMCIA, IDE or NFS root
- Supports native development



- 2700 mailing list members
- 1300 guest developers
- 209 registered developers
- 76 projects hosted on handhelds.org
- 1900 software packages listed on ipkgfind.handhelds.org
- native development cluster
- multiple distributions



- Fluke Networks WaveRunner
 - Enterprise network tester
 - Commercial product
 - H3800 iPAQ
 - Linux-based
 - Single PCMCIA sleeve
 - Fluke 802.11b card
 - <http://www.flukenetworks.com/us/LAN/Handheld+Testers/WaveRunner/Overview.htm>
 - \$4000

- Qtopia from trolltech.com
 - commercial Qt based PDA software
- Hancom Mobile Office
- Lycoris Pocket PC Edition
 - Based on Opie
 - Demonstrated January 2004, available soon for iPAQ and Zaurus
- Many software packages available for Zaurus

Linux cellphones



- Motorola A760 cellphone (Asia)
- E28's E2800 (China)
- Samsung linux-based cellphone (China)





CRL Mercury Project

- BackPAQ: prototyping platform
 - IPAQ extension pack
 - VGA CMOS camera
 - 32MB Flash
 - Xilinx Virtex 200E FPGA
 - external expansion connector
 - 2 PC Card slots
 - 2 axis and 3 axis accelerometers
 - audio codec and headset connector
 - WLAN and WWAN via PC Cards
- Developed by Compaq Research / HP Labs for MIT Oxygen project



iPAQ H3600/BackPAQ



iPAQ H3600/BackPAQ



Developing for iPAQ Linux

Compiling for ARM Linux



- Cross compilation
 - E.g., x86 linux host -> ARM linux target
 - Faster than native compilation
 - Often requires Makefile modification
- Cross-toolchain
 - <ftp://ftp.handhelds.org/pub/linux/arm/toolchain/>
 - Unpack in root directory
 - Add /usr/local/arm/3.2.3/bin to PATH
 - Prepend “arm-linux-” to gcc, g++, ld, strip, nm, ranlib, ar
 - Generally: make CC=arm-linux-gcc all
- To watch out for:
 - Segv from ld usually indicates attempt to link x86 object file into arm binary
 - “Capture” of headers from /usr/include and libs from /usr/lib

- No Makefile issues, but slower
- Use Debian on iPAQ, netwinder, skiff, shark
- iPAQ/skiff Cluster
 - 8 iPAQ's (40Gig local disks), 2 iPAQs (9 Gig local disks), 6 skiffs, 2 sharks
 - iPAQ 1-10, skiff[1-6].handhelds.org, reefshark, tigershark
 - rlogin, telnet, ssh -l guest, no password
 - Use ftp, scp, etc. from the machines to transfer files to them
 - Create a directory in /home2/guest/<emailaddress>
 - Or get your own accounts
 - Maintained by Nick Duffek, George France

- iPKG (Carl Worth)
 - Structure derived from Debian packages
 - Provides apt-get style network installation
 - Small ipkg implementation
 - <http://www.handhelds.org/z/wiki/iPKG>
- Usage
 - ipkg update downloads list of avail packages
 - ipkg install foo (re)installs package foo, its deps
 - ipkg upgrade foo upgrades to latest version of foo
 - ipkg remove foo removes foo
 - Ipkg info foo describes foo package

- control file (required)
 - Package: dtmf dial
 - Version: 0.2-rjr2
 - Depends: libc6, python
 - Architecture: arm
 - Maintainer: Ross Reedstrom <reedstrm@rice.edu>
 - MD5Sum: 3636114a4e31c690933a99ebc3422525
 - Size: 6303
 - Filename: dtmf dial_0.2-rjr2_arm.ipk
 - Description: A command line DTMF tone dialer, with defaults tweaked for use on the Ipaq, and a python-gtk graphical interface
- preinst, postinst, prerm, postrm
 - Scripts to run before/after install/removal

- A feed is a collection of ipkgs
- Packages file
 - summarizes control files for latest version of each ipkg
 - Created by “`ipkg-make-index . > Packages`”
- Feeds accessible via
 - Local filesystem
 - HTTP
 - FTP
 - NFS

- Handhelds.org
 - <http://www.handhelds.org/>
 - <http://www.handhelds.org/handhelds-faq/handhelds-faq.html>
- Familiar Linux Distribution
 - <http://familiar.handhelds.org/>

- http://www.hpl.hp.com/personal/Jamey_Hicks/

- Handhelds.org website (www.handhelds.org)
- Handhelds wiki (www.handhelds.org/z/wiki)
 - Includes search interface
 - World writable – please use and contribute
- Chat (IRC on irc.openprojects.net)
 - #handhelds.org mostly ipaq linux discussion
 - #familiar Familiar distribution discussion
 - #ipaq lightly populated, installation support
 - #opie Opie developers
- Email: (www.handhelds.org/email_lists.html)
 - ipaq@handhelds.org, linux@handhelds.org,
familiar@handhelds.org, bootldr@handhelds.org



i n v e n t